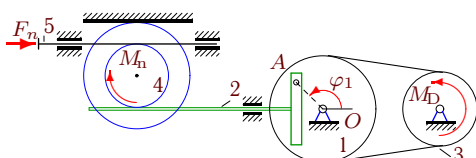


## Кулиса. Уравнение Лагранжа

Кулисный механизм расположен в вертикальной плоскости и состоит из однородных цилиндров, блоков (радиус инерции  $i_k$ ), штока и груза<sup>1</sup>. Используя уравнение Лагранжа 2-го рода, получить уравнение движения механизма. Найти значение углового ускорения  $\ddot{\varphi}_1$  при  $t = 0$ . Кинетическую энергию представить в форме  $T = (\dot{\varphi}^2/2)(A + B \sin^2 \varphi)$  или  $T = (\dot{\varphi}^2/2)(A + B \cos^2 \varphi)$  (варианты помечены \*)

Кирсанов М.Н. **Решебник. Теоретическая механика**/Под ред. А. И. Кириллова.– М.: ФИЗМАТЛИТ, 2008. — 384 с. (с.307.)

### Задача D31.1.



$$M_{D_z} = M_0 - k\omega_{3z}, M_{n_z} = -\mu\omega_{4z},$$

$$F_{n_x} = -\nu v_{5x}, \varphi_{1,0} = 1.4, \omega_{1z,0} = 0.1 \frac{1}{c},$$

$$M_0 = 11 \text{ Нм}, k = 11 \text{ Нмс},$$

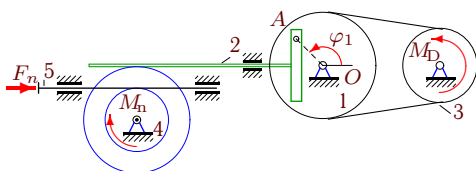
$$\nu = 8 \text{ кНс/м}, \mu = 11 \text{ Нмс},$$

$$I_1 = 11 \text{ кгм}^2, m_2 = 17 \text{ кг}, m_3 = 35 \text{ кг},$$

$$m_4 = 27 \text{ кг}, R_1 = 34 \text{ см}, r_1 = 23 \text{ см},$$

$$R_3 = 24 \text{ см}, R_4 = 20 \text{ см}, r_4 = 12 \text{ см}, i_4 = 16 \text{ см}.$$

### Задача D31.2.



$$M_{D_z} = M_0 - k\omega_{3z}, M_{n_z} = -\mu\omega_{4z},$$

$$F_{n_x} = -\nu v_{5x}, \varphi_{1,0} = 1.5, \omega_{1z,0} = 0.5 \frac{1}{c},$$

$$M_0 = 12 \text{ Нм}, k = 15 \text{ Нмс},$$

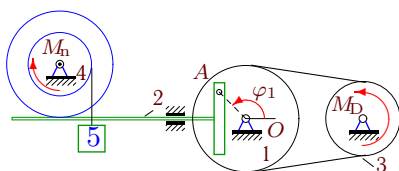
$$\nu = 20 \text{ Нс/м}, \mu = 11 \text{ Нмс},$$

$$I_1 = 13 \text{ кгм}^2, m_2 = 18 \text{ кг}, m_3 = 36 \text{ кг},$$

$$m_4 = 28 \text{ кг}, R_1 = 38 \text{ см}, r_1 = 27 \text{ см},$$

$$R_3 = 28 \text{ см}, R_4 = 20 \text{ см}, r_4 = 12 \text{ см}, i_4 = 17 \text{ см}.$$

### Задача D31.3.



$$M_{D_z} = M_0 - k\omega_{3z}, M_{n_z} = -\mu\omega_{4z},$$

$$M_0 = 9 \text{ Нм}, k = 14 \text{ Нмс},$$

$$\varphi_{1,0} = 1.2, \omega_{1z,0} = 0.4 \frac{1}{c},$$

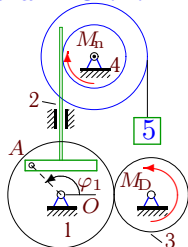
$$\mu = 14 \text{ Нмс}, I_1 = 7 \text{ кгм}^2,$$

$$m_2 = 15 \text{ кг}, m_3 = 33 \text{ кг}, m_4 = 25 \text{ кг},$$

$$m_5 = 4 \text{ кг}, R_1 = 37 \text{ см}, r_1 = 26 \text{ см},$$

$$R_3 = 27 \text{ см}, R_4 = 20 \text{ см}, r_4 = 12 \text{ см}, i_4 = 14 \text{ см}.$$

### Задача D31.4.



$$M_{D_z} = M_0 - k\omega_{3z}, M_{n_z} = -\mu\omega_{4z},$$

$$M_0 = 8 \text{ Нм}, k = 13 \text{ Нмс},$$

$$\varphi_{1,0} = 1.2, \omega_{1z,0} = 0.3 \frac{1}{c},$$

$$\mu = 13 \text{ Нмс}, I_1 = 5 \text{ кгм}^2,$$

$$m_2 = 15 \text{ кг}, m_3 = 33 \text{ кг}, m_4 = 25 \text{ кг},$$

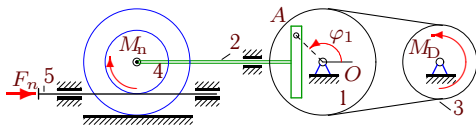
$$m_5 = 2 \text{ кг}, R_1 = 36 \text{ см}, r_1 = 25 \text{ см},$$

$$R_3 = 26 \text{ см}, R_4 = 20 \text{ см}, r_4 = 12 \text{ см}, i_4 = 14 \text{ см}.$$

<sup>1</sup>В некоторых вариантах содержатся не все элементы.

**Задача D31.5.**

1



$$M_{Dz} = M_0 - k\omega_{3z}, M_{nz} = -\mu\omega_{4z},$$

$$F_{nx} = -\nu v_{5x}, \varphi_{1,0} = 1.4, \omega_{1z,0} = 0.3 \frac{1}{c},$$

$$M_0 = 11 \text{ Нм}, k = 13 \text{ Нмс},$$

$$\nu = 8 \text{ кНс/м}, \mu = 11 \text{ Нмс},$$

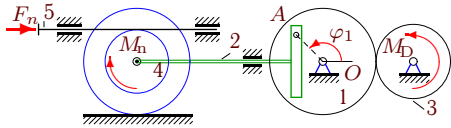
$$I_1 = 11 \text{ кгм}^2, m_2 = 17 \text{ кг}, m_3 = 35 \text{ кг},$$

$$m_4 = 27 \text{ кг}, R_1 = 36 \text{ см}, r_1 = 25 \text{ см},$$

$$R_3 = 26 \text{ см}, R_4 = 20 \text{ см}, r_4 = 12 \text{ см}, i_4 = 16 \text{ см}.$$

**Задача D31.6.**

1



$$M_{Dz} = M_0 - k\omega_{3z}, M_{nz} = -\mu\omega_{4z},$$

$$F_{nx} = -\nu v_{5x}, \varphi_{1,0} = 1.4, \omega_{1z,0} = 0.2 \frac{1}{c},$$

$$M_0 = 10 \text{ Нм}, k = 12 \text{ Нмс},$$

$$\nu = 25 \text{ Нс/м}, \mu = 12 \text{ Нмс},$$

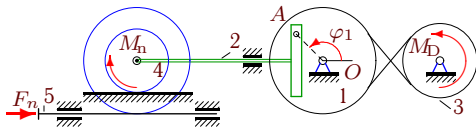
$$I_1 = 7 \text{ кгм}^2, m_2 = 17 \text{ кг}, m_3 = 35 \text{ кг},$$

$$m_4 = 27 \text{ кг}, R_1 = 35 \text{ см}, r_1 = 24 \text{ см},$$

$$R_3 = 25 \text{ см}, R_4 = 20 \text{ см}, r_4 = 12 \text{ см}, i_4 = 16 \text{ см}.$$

**Задача D31.7.**

1



$$M_{Dz} = M_0 - k\omega_{3z}, M_{nz} = -\mu\omega_{4z},$$

$$F_{nx} = -\nu v_{5x}, \varphi_{1,0} = 1.1, \omega_{1z,0} = 0.1 \frac{1}{c},$$

$$M_0 = 9 \text{ Нм}, k = 11 \text{ Нмс},$$

$$\nu = 8 \text{ кНс/м}, \mu = 14 \text{ Нмс},$$

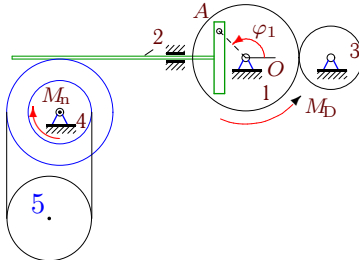
$$I_1 = 6 \text{ кгм}^2, m_2 = 14 \text{ кг}, m_3 = 32 \text{ кг},$$

$$m_4 = 24 \text{ кг}, R_1 = 34 \text{ см}, r_1 = 23 \text{ см},$$

$$R_3 = 24 \text{ см}, R_4 = 20 \text{ см}, r_4 = 12 \text{ см}, i_4 = 13 \text{ см}.$$

**Задача D31.8.**

1



$$M_{Dz} = M_0 - k\omega_{1z}, M_{nz} = -\mu\omega_{4z},$$

$$M_0 = 10 \text{ Нм}, k = 13 \text{ Нмс},$$

$$\varphi_{1,0} = 1.1, \omega_{1z,0} = 0.3 \frac{1}{c},$$

$$\mu = 15 \text{ Нмс}, I_1 = 7 \text{ кгм}^2,$$

$$m_2 = 14 \text{ кг}, m_3 = 32 \text{ кг}, m_4 = 24 \text{ кг},$$

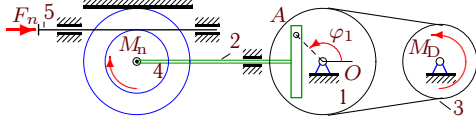
$$m_5 = 50 \text{ кг}, R_1 = 36 \text{ см}, r_1 = 25 \text{ см},$$

$$R_3 = 26 \text{ см}, R_4 = 20 \text{ см}, r_4 = 12 \text{ см}, i_4 = 13 \text{ см},$$

$$r_5 = 16 \text{ см}.$$

**Задача D31.9.**

1



$$M_{Dz} = M_0 - k\omega_{3z}, M_{nz} = -\mu\omega_{4z},$$

$$F_{nx} = -\nu v_{5x}, \varphi_{1,0} = 1.3, \omega_{1z,0} = 0.5 \frac{1}{c},$$

$$M_0 = 10 \text{ Нм}, k = 15 \text{ Нмс},$$

$$\nu = 8 \text{ кНс/м}, \mu = 13 \text{ Нмс},$$

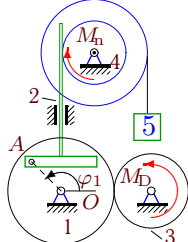
$$I_1 = 9 \text{ кгм}^2, m_2 = 16 \text{ кг}, m_3 = 34 \text{ кг},$$

$$m_4 = 26 \text{ кг}, R_1 = 38 \text{ см}, r_1 = 27 \text{ см},$$

$$R_3 = 28 \text{ см}, R_4 = 20 \text{ см}, r_4 = 12 \text{ см}, i_4 = 15 \text{ см}.$$

**Задача D31.10.**

1



$$M_{Dz} = M_0 - k\omega_{3z}, M_{nz} = -\mu\omega_{4z},$$

$$M_0 = 7 \text{ Нм}, k = 14 \text{ Нмс},$$

$$\varphi_{1,0} = 1.1, \omega_{1z,0} = 0.4 \frac{1}{c},$$

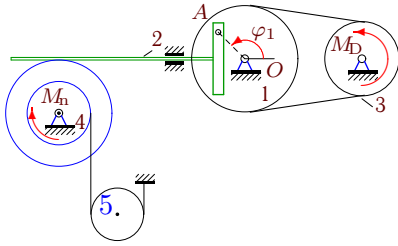
$$\mu = 14 \text{ Нмс}, I_1 = 4 \text{ кгм}^2,$$

$$m_2 = 14 \text{ кг}, m_3 = 32 \text{ кг}, m_4 = 24 \text{ кг},$$

$$m_5 = 1 \text{ кг}, R_1 = 37 \text{ см}, r_1 = 26 \text{ см},$$

$$R_3 = 27 \text{ см}, R_4 = 20 \text{ см}, r_4 = 12 \text{ см}, i_4 = 13 \text{ см}.$$

**Задача D31.11.**



$$M_{Dz} = M_0 - k\omega_{3z}, M_{nz} = -\mu\omega_{4z},$$

$$M_0 = 11 \text{ Нм}, k = 12 \text{ Нмс},$$

$$\varphi_{1,0} = 1.4, \omega_{1z,0} = 0.2 \frac{1}{\text{с}},$$

$$\mu = 12 \text{ Нмс}, I_1 = 11 \text{ кгм}^2,$$

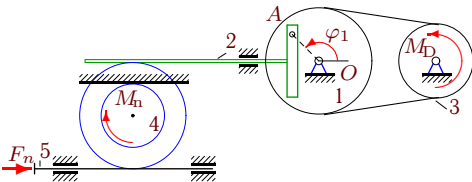
$$m_2 = 17 \text{ кг}, m_3 = 35 \text{ кг}, m_4 = 27 \text{ кг},$$

$$m_5 = 6 \text{ кг}, R_1 = 35 \text{ см}, r_1 = 24 \text{ см},$$

$$R_3 = 25 \text{ см}, R_4 = 20 \text{ см}, r_4 = 12 \text{ см}, i_4 = 16 \text{ см},$$

$$r_5 = 11 \text{ см}.$$

**Задача D31.12.**



$$M_{Dz} = M_0 - k\omega_{3z}, M_{nz} = -\mu\omega_{4z},$$

$$F_{nx} = -\nu v_{5x}, \varphi_{1,0} = 1.4, \omega_{1z,0} = 0.4 \frac{1}{\text{с}},$$

$$M_0 = 11 \text{ Нм}, k = 14 \text{ Нмс},$$

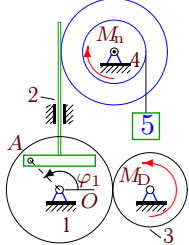
$$\nu = 25 \text{ Нс/м}, \mu = 12 \text{ Нмс},$$

$$I_1 = 11 \text{ кгм}^2, m_2 = 17 \text{ кг}, m_3 = 35 \text{ кг},$$

$$m_4 = 27 \text{ кг}, R_1 = 37 \text{ см}, r_1 = 26 \text{ см},$$

$$R_3 = 27 \text{ см}, R_4 = 20 \text{ см}, r_4 = 12 \text{ см}, i_4 = 16 \text{ см}.$$

**Задача D31.13.**



$$M_{Dz} = M_0 - k\omega_{3z}, M_{nz} = -\mu\omega_{4z},$$

$$M_0 = 10 \text{ Нм}, k = 11 \text{ Нмс},$$

$$\varphi_{1,0} = 1.4, \omega_{1z,0} = 0.1 \frac{1}{\text{с}},$$

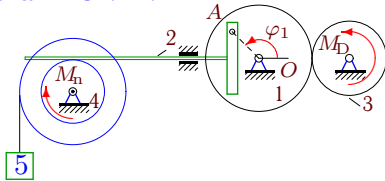
$$\mu = 12 \text{ Нмс}, I_1 = 7 \text{ кгм}^2,$$

$$m_2 = 17 \text{ кг}, m_3 = 35 \text{ кг}, m_4 = 27 \text{ кг},$$

$$m_5 = 5 \text{ кг}, R_1 = 34 \text{ см}, r_1 = 23 \text{ см},$$

$$R_3 = 24 \text{ см}, R_4 = 20 \text{ см}, r_4 = 12 \text{ см}, i_4 = 16 \text{ см}.$$

**Задача D31.14.**



$$M_{Dz} = M_0 - k\omega_{3z}, M_{nz} = -\mu\omega_{4z},$$

$$M_0 = 7 \text{ Нм}, k = 11 \text{ Нмс},$$

$$\varphi_{1,0} = 1.1, \omega_{1z,0} = 0.1 \frac{1}{\text{с}},$$

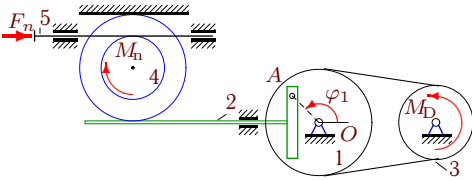
$$\mu = 14 \text{ Нмс}, I_1 = 4 \text{ кгм}^2,$$

$$m_2 = 14 \text{ кг}, m_3 = 32 \text{ кг}, m_4 = 24 \text{ кг},$$

$$m_5 = 1 \text{ кг}, R_1 = 34 \text{ см}, r_1 = 23 \text{ см},$$

$$R_3 = 24 \text{ см}, R_4 = 20 \text{ см}, r_4 = 12 \text{ см}, i_4 = 13 \text{ см}.$$

**Задача D31.15.**



$$M_{Dz} = M_0 - k\omega_{3z}, M_{nz} = -\mu\omega_{4z},$$

$$F_{nx} = -\nu v_{5x}, \varphi_{1,0} = 1.3, \omega_{1z,0} = 0.4 \frac{1}{\text{с}},$$

$$M_0 = 10 \text{ Нм}, k = 14 \text{ Нмс},$$

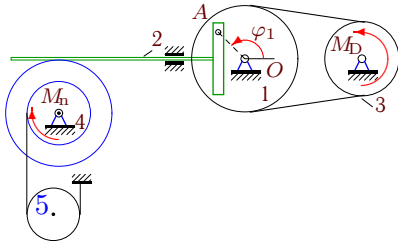
$$\nu = 8 \text{ Нс/м}, \mu = 13 \text{ Нмс},$$

$$I_1 = 9 \text{ кгм}^2, m_2 = 16 \text{ кг}, m_3 = 34 \text{ кг},$$

$$m_4 = 26 \text{ кг}, R_1 = 37 \text{ см}, r_1 = 26 \text{ см},$$

$$R_3 = 27 \text{ см}, R_4 = 20 \text{ см}, r_4 = 12 \text{ см}, i_4 = 15 \text{ см}.$$

**Задача D31.16.**



$$M_{Dz} = M_0 - k\omega_{3z}, M_{nz} = -\mu\omega_{4z},$$

$$M_0 = 10 \text{ Нм}, k = 15 \text{ Нмс},$$

$$\varphi_{1,0} = 1.3, \omega_{1z,0} = 0.5 \frac{1}{\text{с}},$$

$$\mu = 13 \text{ Нмс}, I_1 = 9 \text{ кгм}^2,$$

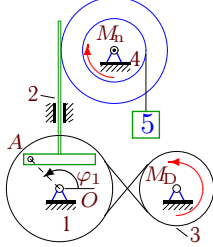
$$m_2 = 16 \text{ кг}, m_3 = 34 \text{ кг}, m_4 = 26 \text{ кг},$$

$$m_5 = 5 \text{ кг}, R_1 = 38 \text{ см}, r_1 = 27 \text{ см},$$

$$R_3 = 28 \text{ см}, R_4 = 20 \text{ см}, r_4 = 12 \text{ см}, i_4 = 15 \text{ см},$$

$$r_5 = 11 \text{ см}.$$

**Задача D31.17.**



$$M_{Dz} = M_0 - k\omega_{3z}, M_{nz} = -\mu\omega_{4z},$$

$$M_0 = 10 \text{ Нм}, k = 14 \text{ Нмс},$$

$$\varphi_{1,0} = 1.2, \omega_{1z,0} = 0.4 \frac{1}{\text{с}},$$

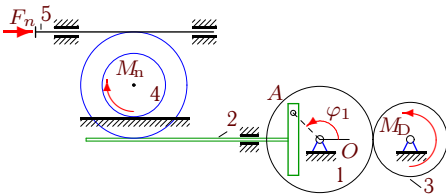
$$\mu = 14 \text{ Нмс}, I_1 = 9 \text{ кгм}^2,$$

$$m_2 = 15 \text{ кг}, m_3 = 33 \text{ кг}, m_4 = 25 \text{ кг},$$

$$m_5 = 5 \text{ кг}, R_1 = 37 \text{ см}, r_1 = 26 \text{ см},$$

$$R_3 = 27 \text{ см}, R_4 = 20 \text{ см}, r_4 = 12 \text{ см}, i_4 = 14 \text{ см}.$$

**Задача D31.18.**



$$M_{Dz} = M_0 - k\omega_{3z}, M_{nz} = -\mu\omega_{4z},$$

$$F_{nx} = -\nu v_{5x}, \varphi_{1,0} = 1.4, \omega_{1z,0} = 0.4 \frac{1}{\text{с}},$$

$$M_0 = 10 \text{ Нм}, k = 14 \text{ Нмс},$$

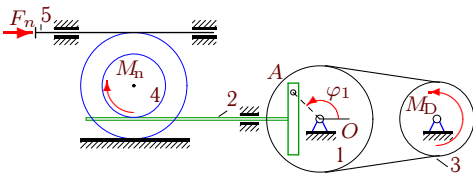
$$\nu = 25 \text{ Нс/м}, \mu = 12 \text{ Нмс},$$

$$I_1 = 7 \text{ кгм}^2, m_2 = 17 \text{ кг}, m_3 = 35 \text{ кг},$$

$$m_4 = 27 \text{ кг}, R_1 = 37 \text{ см}, r_1 = 26 \text{ см},$$

$$R_3 = 27 \text{ см}, R_4 = 20 \text{ см}, r_4 = 12 \text{ см}, i_4 = 16 \text{ см}.$$

**Задача D31.19.**



$$M_{Dz} = M_0 - k\omega_{3z}, M_{nz} = -\mu\omega_{4z},$$

$$F_{nx} = -\nu v_{5x}, \varphi_{1,0} = 1.2, \omega_{1z,0} = 0.5 \frac{1}{\text{с}},$$

$$M_0 = 9 \text{ Нм}, k = 15 \text{ Нмс},$$

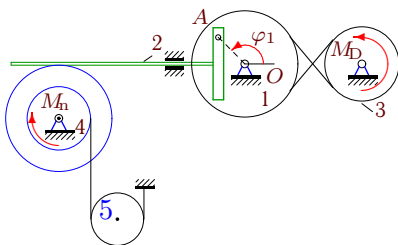
$$\nu = 25 \text{ Нс/м}, \mu = 14 \text{ Нмс},$$

$$I_1 = 7 \text{ кгм}^2, m_2 = 15 \text{ кг}, m_3 = 33 \text{ кг},$$

$$m_4 = 25 \text{ кг}, R_1 = 38 \text{ см}, r_1 = 27 \text{ см},$$

$$R_3 = 28 \text{ см}, R_4 = 20 \text{ см}, r_4 = 12 \text{ см}, i_4 = 14 \text{ см}.$$

**Задача D31.20.**



$$M_{Dz} = M_0 - k\omega_{3z}, M_{nz} = -\mu\omega_{4z},$$

$$M_0 = 12 \text{ Нм}, k = 15 \text{ Нмс},$$

$$\varphi_{1,0} = 1.4, \omega_{1z,0} = 0.5 \frac{1}{\text{с}},$$

$$\mu = 12 \text{ Нмс}, I_1 = 15 \text{ кгм}^2,$$

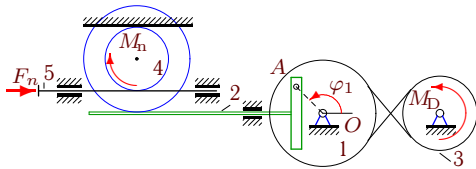
$$m_2 = 17 \text{ кг}, m_3 = 35 \text{ кг}, m_4 = 27 \text{ кг},$$

$$m_5 = 7 \text{ кг}, R_1 = 38 \text{ см}, r_1 = 27 \text{ см},$$

$$R_3 = 28 \text{ см}, R_4 = 20 \text{ см}, r_4 = 12 \text{ см}, i_4 = 16 \text{ см},$$

$$r_5 = 12 \text{ см}.$$

**Задача D31.21.**



$$M_{Dz} = M_0 - k\omega_{3z}, M_{nz} = -\mu\omega_{4z},$$

$$F_{nx} = -\nu v_{5x}, \varphi_{1,0} = 1.5, \omega_{1z,0} = 0.1 \frac{1}{c},$$

$$M_0 = 13 \text{ Нм}, k = 11 \text{ Нмс},$$

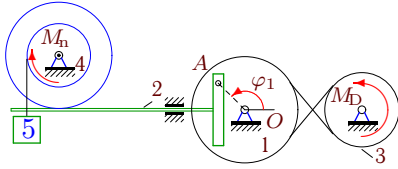
$$\nu = 35 \text{ Нс/м}, \mu = 11 \text{ Нмс},$$

$$I_1 = 18 \text{ кгм}^2, m_2 = 18 \text{ кг}, m_3 = 36 \text{ кг},$$

$$m_4 = 28 \text{ кг}, R_1 = 34 \text{ см}, r_1 = 23 \text{ см},$$

$$R_3 = 24 \text{ см}, R_4 = 20 \text{ см}, r_4 = 12 \text{ см}, i_4 = 17 \text{ см}.$$

**Задача D31.22.**



$$M_{Dz} = M_0 - k\omega_{3z}, M_{nz} = -\mu\omega_{4z},$$

$$M_0 = 9 \text{ Нм}, k = 11 \text{ Нмс},$$

$$\varphi_{1,0} = 1.1, \omega_{1z,0} = 0.1 \frac{1}{c},$$

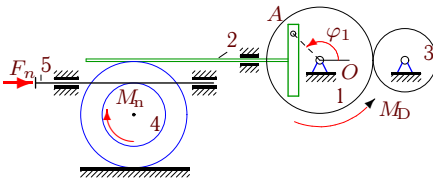
$$\mu = 15 \text{ Нмс}, I_1 = 6 \text{ кгм}^2,$$

$$m_2 = 14 \text{ кг}, m_3 = 32 \text{ кг}, m_4 = 24 \text{ кг},$$

$$m_5 = 4 \text{ кг}, R_1 = 34 \text{ см}, r_1 = 23 \text{ см},$$

$$R_3 = 24 \text{ см}, R_4 = 20 \text{ см}, r_4 = 12 \text{ см}, i_4 = 13 \text{ см}.$$

**Задача D31.23.**



$$M_{Dz} = M_0 - k\omega_{1z}, M_{nz} = -\mu\omega_{4z},$$

$$F_{nx} = -\nu v_{5x}, \varphi_{1,0} = 1.4, \omega_{1z,0} = 0.3 \frac{1}{c},$$

$$M_0 = 13 \text{ Нм}, k = 13 \text{ Нмс},$$

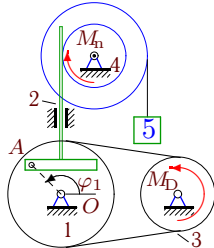
$$\nu = 25 \text{ Нс/м}, \mu = 12 \text{ Нмс},$$

$$I_1 = 19 \text{ кгм}^2, m_2 = 17 \text{ кг}, m_3 = 35 \text{ кг},$$

$$m_4 = 27 \text{ кг}, R_1 = 36 \text{ см}, r_1 = 25 \text{ см},$$

$$R_3 = 26 \text{ см}, R_4 = 20 \text{ см}, r_4 = 12 \text{ см}, i_4 = 16 \text{ см}.$$

**Задача D31.24.**



$$M_{Dz} = M_0 - k\omega_{3z}, M_{nz} = -\mu\omega_{4z},$$

$$M_0 = 12 \text{ Нм}, k = 11 \text{ Нмс},$$

$$\varphi_{1,0} = 1.5, \omega_{1z,0} = 0.1 \frac{1}{c},$$

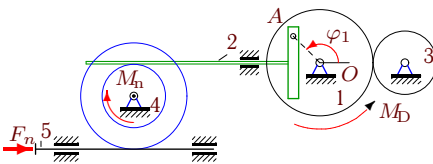
$$\mu = 10 \text{ Нмс}, I_1 = 13 \text{ кгм}^2,$$

$$m_2 = 18 \text{ кг}, m_3 = 36 \text{ кг}, m_4 = 28 \text{ кг},$$

$$m_5 = 6 \text{ кг}, R_1 = 34 \text{ см}, r_1 = 23 \text{ см},$$

$$R_3 = 24 \text{ см}, R_4 = 20 \text{ см}, r_4 = 12 \text{ см}, i_4 = 17 \text{ см}.$$

**Задача D31.25.**



$$M_{Dz} = M_0 - k\omega_{1z}, M_{nz} = -\mu\omega_{4z},$$

$$F_{nx} = -\nu v_{5x}, \varphi_{1,0} = 1.2, \omega_{1z,0} = 0.4 \frac{1}{c},$$

$$M_0 = 11 \text{ Нм}, k = 14 \text{ Нмс},$$

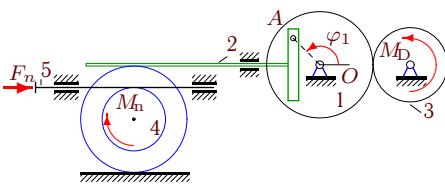
$$\nu = 8 \text{ Нс/м}, \mu = 13 \text{ Нмс},$$

$$I_1 = 11 \text{ кгм}^2, m_2 = 15 \text{ кг}, m_3 = 33 \text{ кг},$$

$$m_4 = 25 \text{ кг}, R_1 = 37 \text{ см}, r_1 = 26 \text{ см},$$

$$R_3 = 27 \text{ см}, R_4 = 20 \text{ см}, r_4 = 12 \text{ см}, i_4 = 14 \text{ см}.$$

**Задача D31.26.**



$$M_{Dz} = M_0 - k\omega_{3z}, M_{nz} = -\mu\omega_{4z},$$

$$F_{nx} = -\nu v_{5x}, \varphi_{1,0} = 1.4, \omega_{1z,0} = 0.1 \frac{1}{c},$$

$$M_0 = 10 \text{ Нм}, k = 11 \text{ Нмс},$$

$$\nu = 25 \text{ Нс/м}, \mu = 12 \text{ Нмс},$$

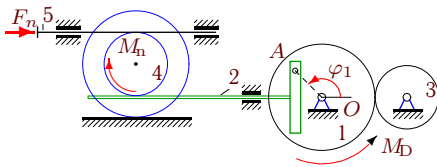
$$I_1 = 7 \text{ кгм}^2, m_2 = 17 \text{ кг}, m_3 = 35 \text{ кг},$$

$$m_4 = 27 \text{ кг}, R_1 = 34 \text{ см}, r_1 = 23 \text{ см},$$

$$R_3 = 24 \text{ см}, R_4 = 20 \text{ см}, r_4 = 12 \text{ см}, i_4 = 16 \text{ см}.$$

**Задача D31.27.**

1



$$M_{Dz} = M_0 - k\omega_{1z}, M_{nz} = -\mu\omega_{4z},$$

$$F_{nx} = -\nu v_{5x}, \varphi_{1,0} = 1.1, \omega_{1z,0} = 0.5 \frac{1}{c},$$

$$M_0 = 10 \text{ Нм}, k = 15 \text{ Нмс},$$

$$\nu = 40 \text{ Нс/м}, \mu = 14 \text{ Нмс},$$

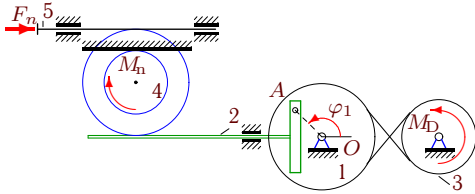
$$I_1 = 7 \text{ кгм}^2, m_2 = 14 \text{ кг}, m_3 = 32 \text{ кг},$$

$$m_4 = 24 \text{ кг}, R_1 = 38 \text{ см}, r_1 = 27 \text{ см},$$

$$R_3 = 28 \text{ см}, R_4 = 20 \text{ см}, r_4 = 12 \text{ см}, i_4 = 13 \text{ см}.$$

**Задача D31.28.**

1



$$M_{Dz} = M_0 - k\omega_{3z}, M_{nz} = -\mu\omega_{4z},$$

$$F_{nx} = -\nu v_{5x}, \varphi_{1,0} = 1.3, \omega_{1z,0} = 0.2 \frac{1}{c},$$

$$M_0 = 11 \text{ Нм}, k = 12 \text{ Нмс},$$

$$\nu = 8 \text{ Нс/м}, \mu = 13 \text{ Нмс},$$

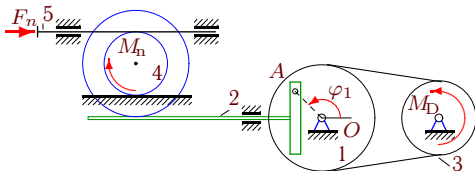
$$I_1 = 12 \text{ кгм}^2, m_2 = 16 \text{ кг}, m_3 = 34 \text{ кг},$$

$$m_4 = 26 \text{ кг}, R_1 = 35 \text{ см}, r_1 = 24 \text{ см},$$

$$R_3 = 25 \text{ см}, R_4 = 20 \text{ см}, r_4 = 12 \text{ см}, i_4 = 15 \text{ см}.$$

**Задача D31.29.**

1



$$M_{Dz} = M_0 - k\omega_{3z}, M_{nz} = -\mu\omega_{4z},$$

$$F_{nx} = -\nu v_{5x}, \varphi_{1,0} = 1.5, \omega_{1z,0} = 0.2 \frac{1}{c},$$

$$M_0 = 12 \text{ Нм}, k = 12 \text{ Нмс},$$

$$\nu = 35 \text{ Нс/м}, \mu = 10 \text{ Нмс},$$

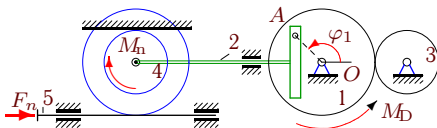
$$I_1 = 13 \text{ кгм}^2, m_2 = 18 \text{ кг}, m_3 = 36 \text{ кг},$$

$$m_4 = 28 \text{ кг}, R_1 = 35 \text{ см}, r_1 = 24 \text{ см},$$

$$R_3 = 25 \text{ см}, R_4 = 20 \text{ см}, r_4 = 12 \text{ см}, i_4 = 17 \text{ см}.$$

**Задача D31.30.**

1



$$M_{Dz} = M_0 - k\omega_{1z}, M_{nz} = -\mu\omega_{4z},$$

$$F_{nx} = -\nu v_{5x}, \varphi_{1,0} = 1.3, \omega_{1z,0} = 0.2 \frac{1}{c},$$

$$M_0 = 12 \text{ Нм}, k = 12 \text{ Нмс},$$

$$\nu = 30 \text{ Нс/м}, \mu = 12 \text{ Нмс},$$

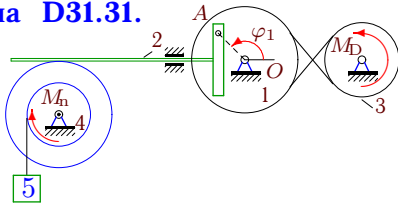
$$I_1 = 15 \text{ кгм}^2, m_2 = 16 \text{ кг}, m_3 = 34 \text{ кг},$$

$$m_4 = 26 \text{ кг}, R_1 = 35 \text{ см}, r_1 = 24 \text{ см},$$

$$R_3 = 25 \text{ см}, R_4 = 20 \text{ см}, r_4 = 12 \text{ см}, i_4 = 15 \text{ см}.$$

**Задача D31.31.**

1



$$M_{Dz} = M_0 - k\omega_{3z}, M_{nz} = -\mu\omega_{4z},$$

$$M_0 = 11 \text{ Нм}, k = 13 \text{ Нмс},$$

$$\varphi_{1,0} = 1.3, \omega_{1z,0} = 0.3 \frac{1}{c},$$

$$\mu = 13 \text{ Нмс}, I_1 = 12 \text{ кгм}^2,$$

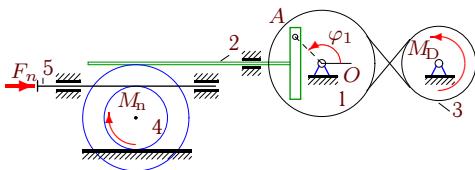
$$m_2 = 16 \text{ кг}, m_3 = 34 \text{ кг}, m_4 = 26 \text{ кг},$$

$$m_5 = 6 \text{ кг}, R_1 = 36 \text{ см}, r_1 = 25 \text{ см},$$

$$R_3 = 26 \text{ см}, R_4 = 20 \text{ см}, r_4 = 12 \text{ см}, i_4 = 15 \text{ см}.$$

**Задача D31.32.**

1



$$M_{Dz} = M_0 - k\omega_{3z}, M_{nz} = -\mu\omega_{4z},$$

$$F_{nx} = -\nu v_{5x}, \varphi_{1,0} = 1.5, \omega_{1z,0} = 0.3 \frac{1}{c},$$

$$M_0 = 13 \text{ Нм}, k = 13 \text{ Нмс},$$

$$\nu = 35 \text{ Нс/м}, \mu = 11 \text{ Нмс},$$

$$I_1 = 18 \text{ кгм}^2, m_2 = 18 \text{ кг}, m_3 = 36 \text{ кг},$$

$$m_4 = 28 \text{ кг}, R_1 = 36 \text{ см}, r_1 = 25 \text{ см},$$

$$R_3 = 26 \text{ см}, R_4 = 20 \text{ см}, r_4 = 12 \text{ см}, i_4 = 17 \text{ см}.$$

**D31 Ответы.**  
**Кулиса. Уравнение Лагранжа**

21.03.2012

	$A$	$B$	$Q$	$\varepsilon$	$B_2$	$B_4$	$B_5$	$Q_F$	$Q_M$	$Q_D$	$Q_T$
1	13.023	1.814	10.255	0.693	0.90	0.92	0.00	-2.57	-0.55	13.38	0.00
2	15.599	2.787	-7.763	-0.425	1.31	1.47	0.00	-0.26	-9.97	2.47	0.00
3	9.259	1.939	-0.699	-0.073	1.01	0.83	0.10	0.00	-8.22	1.82	5.71
4*	7.138	3.411	-31.144	-4.092	0.94	2.13	0.35	0.00	-2.22	-18.55	-10.37
5	13.268	3.830	-20.560	-1.214	1.06	2.77	0.00	-23.31	-5.01	7.75	0.00
6	9.144	3.530	-22.776	-1.814	0.98	2.55	0.00	-0.72	-3.36	-18.70	0.00
7	7.850	3.500	-33.981	-3.198	0.74	2.76	0.00	-14.94	-4.08	-14.96	0.00
8	9.074	2.634	22.372	1.995	0.88	0.63	1.13	0.00	-5.58	6.10	21.86
9	11.455	4.128	-54.558	-3.586	1.17	2.96	0.00	-43.32	-11.00	-0.24	0.00
10*	6.190	3.038	-39.787	-5.809	0.95	1.90	0.19	0.00	-5.41	-20.11	-14.27
11	13.144	2.021	3.164	0.209	0.98	1.00	0.05	0.00	-3.36	10.70	-4.18
12	13.396	12.557	-55.181	-2.170	1.15	11.41	0.00	-10.50	-49.24	4.56	0.00
13*	9.023	1.909	-21.789	-2.400	0.90	0.91	0.10	0.00	-0.05	-16.37	-5.37
14	5.850	2.378	-12.858	-1.663	0.74	1.49	0.15	0.00	-4.08	-12.12	3.35
15	11.327	1.768	-6.886	-0.537	1.08	0.69	0.00	-8.03	-2.04	3.19	0.00
16	11.455	2.282	-7.413	-0.557	1.17	1.07	0.05	0.00	-11.00	-0.24	3.83
17*	11.259	1.964	-36.553	-3.165	1.01	0.83	0.12	0.00	-1.24	-24.22	-11.09
18	9.396	12.557	-83.959	-3.904	1.15	11.41	0.00	-10.50	-49.24	-24.22	0.00
19	9.383	18.066	-90.654	-3.676	1.09	16.97	0.00	-19.79	-69.27	-1.60	0.00
20	17.527	2.568	-46.200	-2.313	1.24	1.26	0.07	0.00	-10.62	-30.10	-5.48
21	20.081	1.579	-21.293	-0.984	0.95	0.63	0.00	-0.10	-0.57	-20.62	0.00
22	7.850	1.353	-21.359	-2.394	0.74	0.54	0.08	0.00	-1.58	-14.96	-4.83
23	21.268	1.754	7.443	0.323	1.06	0.69	0.00	-0.29	-1.37	9.10	0.00
24*	15.081	4.807	13.497	0.894	0.95	2.97	0.88	0.00	-0.02	14.79	-1.28
25	13.259	3.314	-537.796	-33.336	1.01	2.30	0.00	-521.99	-21.21	5.40	0.00
26	9.023	1.485	-16.842	-1.610	0.90	0.59	0.00	-0.08	-0.39	-16.37	0.00
27	9.310	16.576	-79.357	-3.605	1.02	15.56	0.00	-18.53	-63.33	2.50	0.00
28	14.083	1.461	-26.810	-1.737	0.92	0.54	0.00	-5.35	-1.36	-20.10	0.00
29	15.205	11.948	-9.425	-0.349	1.04	10.91	0.00	-3.61	-17.91	12.10	0.00
30	17.082	4.759	-1.595	-0.076	0.92	3.84	0.00	-2.28	-8.91	9.60	0.00
31	14.203	2.049	-19.858	-1.236	1.00	0.91	0.14	0.00	-5.66	-22.71	8.51
32	20.333	1.865	-27.848	-1.256	1.13	0.74	0.00	-0.37	-2.00	-25.48	0.00

D31 файл о31d1A